



REBOTNIX[®]
INDUSTRIAL A.I. SOLUTIONS

APPLICATION CATALOG

ALL IN SOLUTION



ABOUT APPSTORE

The REBOTNIX appstore provides ready-to-use applications with high-performance trained AI models. These applications and models are constantly being developed and improved.

APPLICATIONS

EVERY APPLICATION IS BINDED TO THE GUSTAV BOX AND AN HARDWARE CRYPTO CHIP REQUIRES AN LICENSE

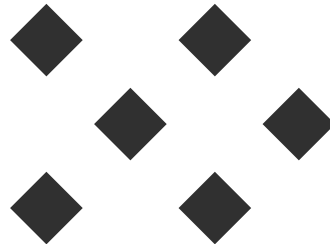
NAME	SKU	REQUIRED HARDWARE	PRICING	PERIOD
TTS Engine	RB_TTS_122024	ORIN Nano 8GB or ORIN NX 8GB or 16GB	599,00 €	Flatrate per year
STT Engine	RB_SST_122024	ORIN NX 8GB or 16GB	499,00 €	Flatrate per year
HP-Model Human	RB_HP_122024	ORIN Nano 8GB or ORIN NX 8GB or 16GB	499,00 €	Flatrate per year
Smart City	RB_SC_122024	ORIN Nano 8GB or ORIN NX 8GB or 16GB	539,00 €	Flatrate per month
LICENSE PLATE & RECOGNITION	RB_OCR_122024	ORIN NX 8GB or 16GB	499,00 €	Flatrate per year

PRICING FOR ONE BOX INSTALLATION. ALL PRICES ARE IN EUROS.

ALL ARE TRAINED FROM SCRATCH AND CAN BE FINE-TUNED USING REBOTNIX'S LOW-ENERGY DATA CENTER.

www.rebotnix.com





APPLICATION TTS-ENGINE

SKU RB_TTS_122024

REBOTNIX text to speech engine is a text to speech engine with focus on the highest accuracy of quality, optimized for NVIDIA JETSON and Metropolis frameworks.

Optimized for low power consumption, expandable with custom voices, the tts engine in combination with the REBOTNIX gustav hardware offers the highest value per price and GPT based output in the market. The engine works offline without any cloud access.

We currently support 12 different languages (Arabic, Brazilian Portuguese, Chinese, Czech, Dutch, English, French, German, Italian, Polish, Spanish Turkish).

It is possible to fine-tune a model using our application service.

hi, how are you?

Select your main voice. We have 151 voices available, yeah!

ENGLISH ITALIAN SPANISH FRANCE GERMAN POLISH TURKISH RUSSIAN GREECE ROMANIAN FINLAND SWEDEN NETHERLAND PORTUGUESE
JAPANESE CHINESE

INTONATION 1 INTONATION 85 PROSODY 1 PROSODY 85

You can choose between 44 english voices. To pre-listen to any voice for free, press the audio icon.

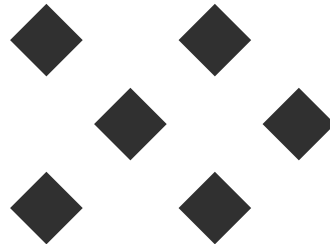
MARK BETA (EN)	LUKA BETA (EN)	ALFRED BETA (EN)	MARIKA BETA (EN)	FEMALE 1	FEMALE 2	FEMALE 3	FEMALE 4	FEMALE 5
FEMALE 6	FEMALE 7	FEMALE 8	FEMALE 9	FEMALE 10	FEMALE 11	FEMALE 12	FEMALE 13	FEMALE 14
FEMALE 15	FEMALE 16	FEMALE 17	FEMALE 18	FEMALE 19	FEMALE 20	FEMALE 21	MALE 15	MALE 16
MALE 1	MALE 2	MALE 3	MALE 4	MALE 5	MALE 6	MALE 7	MALE 8	MALE 9
MALE 10	MALE 11	MALE 12	MALE 13	MALE 14	MALE 15	MALE 16	MALE 17	

ENGLISH You can edit and re-synthesize the translated text here.

hi, how are you?

OXYGEN 60 OXYGEN 100 OXYGEN 130 EMOTION 85 EMOTION 100 EMOTION 120

PLAY



REBOTNIX[®]
INDUSTRIAL A.I. SOLUTIONS

APPLICATION STT-ENGINE

SKU RB_STT_122024

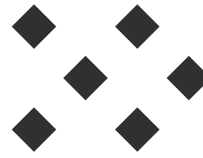
The STT engine offers a audio to text transcription and, if desired, a translation into other languages from the transcription.

Supported languages:

English, German, Spanish, Czech, Italian, French, Swedish.

In combination with the downstream translation module, we can translate the text into other languages.

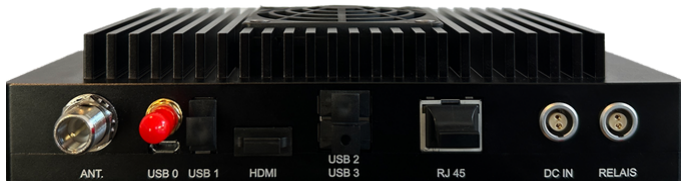
The Translate from STT is a separate module that can translate the output from the TTS engine into another language.



REBOTNIX[®]
INDUSTRIAL A.I. SOLUTIONS

APPLICATION CATALOG

ALL IN ONE SOLUTION



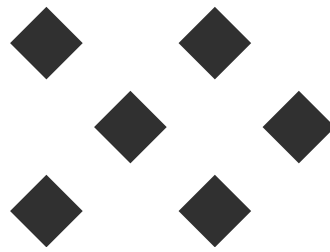
NAME	SKU	REQUIRED HARDWARE	PRICING	LIMITS
VISIONTOOLS	RB_VISIONTOOLS*1	ORIN NX 16GB OR ORIN AGX	5.998,00 €	Flatrate

VISIONTOOLS REQUIRE FOR TRAINING INSTANCE AN RTX 3090, RTX 4090 AND A100 OR HIGHER

COMPONENTS-STANDARD IN RB-SDK

NAME	SKU	REQUIRED HARDWARE	PRICING	LIMITS
RB_COMPRESS	RB_SDK	ORIN NANO 8GB, ORIN 8GB OR 16GB or AGX ORIN	free	-
RB_STREAM	RB_SDK	ORIN NANO 8GB, ORIN 8GB OR 16GB or AGX ORIN	free	-
RB_CRYPTO	RB_SDK	ORIN NANO 8GB, ORIN 8GB OR 16GB or AGX ORIN	free	-

LINK: [HTTPS://DOCS.REBOTNIX.COM](https://docs.rebotnix.com)

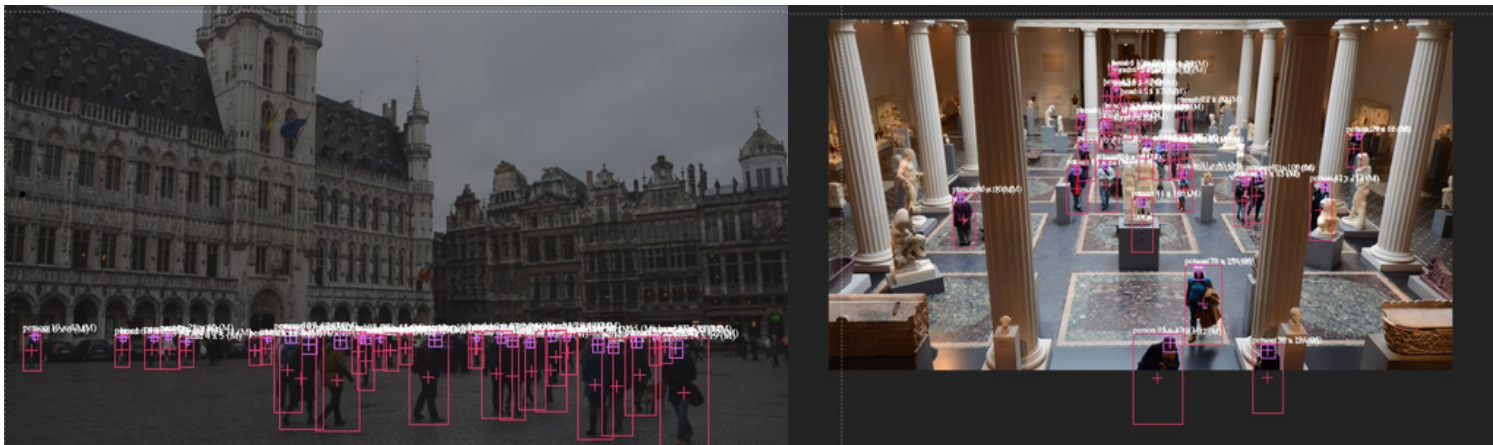


APPLICATION HP-HUMAN

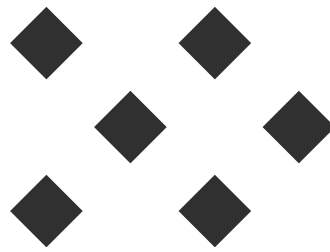
SKU RB_HP_122024

REBOTNIX HP, human people is an AI model that has been trained from the ground up to recognize heads and people for various applications. Among others for an anomalization of person protected content.

The application returns the number of people x and y position of each recognised person. The model is constantly being upgraded to ensure the highest accuracy.



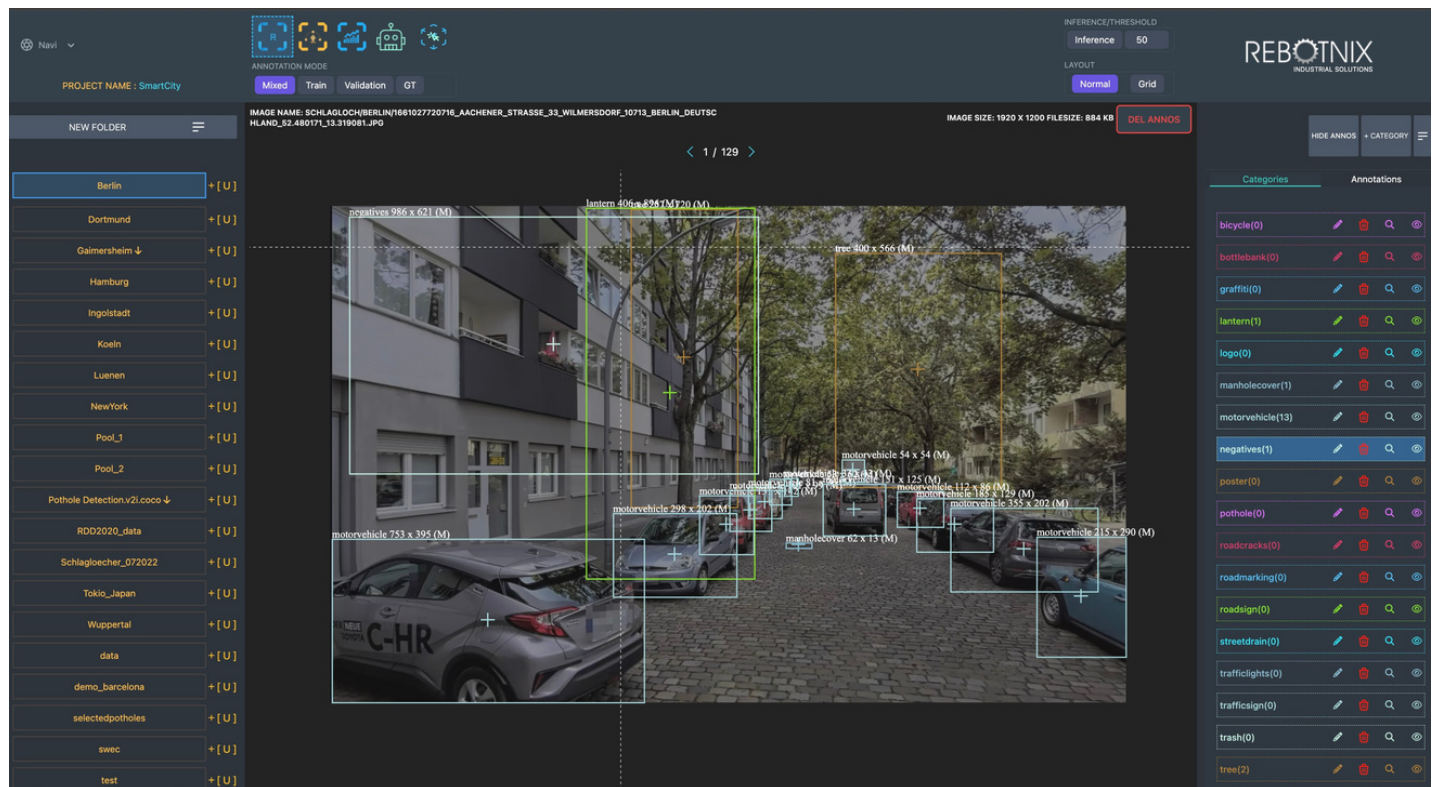
It is possible to fine-tune a model using our application service.



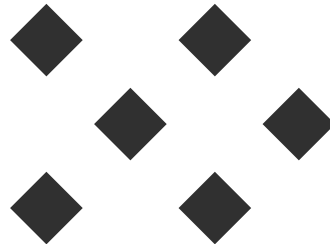
APPLICATION SMART CITY

SKU RB_SC_122024

REBOTNIX smart city is one of the most comprehensive models from REBOTNIX. It detects 19 classes from the smart city category such as trees, potholes, traffic signs, motorised vehicles, bicycles and many others. Rebotnix smart city is developed with the in-house vision tools for object detection processes.



It is possible to fine-tune a model using our application service.

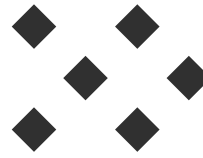


LICENSE PLATE & RECOGNITION SKU RB_SC_122024

REBOTNIX enables the reliable recognition of license plates and the extraction of texts. In doing so, we differentiate between in line and multiple labeling.



**It is possible to fine-tune a model using
our application service.**



REBOTNIX[®]
INDUSTRIAL A.I. SOLUTIONS

SERVICES

FINE TUNING SERVICE

Each model can be fine-tuned via the rebotnix low energy datacenter in Europe. If you notice that the quality is not good enough, you can improve the model with your own data.

For this purpose, a protected and encrypted training session is set up to a low energy data center, the data is uploaded. you then briefly describe the text and we can present the annotations. First submit the annotations, which you then confirm for training.

All services are fully automated, you do not need to label or annotate the data, we also train the best model and report details about the training process. At the end you can export and download the new own model and execute it on your license GUSTAV hardware.

SERVICE	SKU	AMOUNT OF DATA	PRICING
TTS Engine	FT_RB_TTS_122024	1 HOUR OF AUDIO DATA	299,00 €
STT Engine TRANSLATE STT	FT_RB_STT Engine	1 HOUR OF AUDIO DATA	399,00 € 99.00 €
HP-Model Human	FT_RB_HP_122024	1000 Annotations	499,00 €
Smart City	FT_RB_SC_122024	1000 Annotations	499,00 €



REBOTNIX AUTO TRAINING SERVICE

ANNOTATION, LABELING AND TRAINING INCLUDED.



UPLOAD



AUTO SERVICE

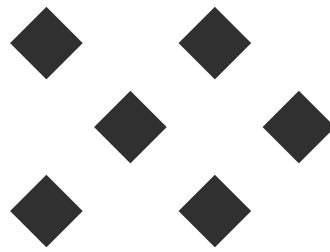


DOWNLOAD



-> FINE-TUNING PIPELINE <-





APPLICATION VISIONTOOLS

SKU RB_VISIONTOOLS

VISIONTOOLS was developed in 2019 for the use of low-power visual computers. It consists of a set of software tools to make working with complex AI models easy. The software modules include a project management, user administration, a visual labeling editor as well as an export for any A.I. model that you create with VISIONTOOLS. Each module works without cloud constraints.

Accurate fast

A data-centric approach to AI ensures quality data even for small datasets.

Ultra Easy

An intuitive Cloud or onPremise solution that lets you create a custom computer vision project in minutes.

Flexible deployment

Deploy your model with just a few mouse clicks using our cloud or edge inference engine.

Unlimited scalability

Scaling projects is simple with REBOTNIX VISIONTOOLS, from a single line of production to worldwide operations.

